

Orchard Asset - Reporting Dashboards - providing you with a 360 degree view

Orchard Asset Reporting Dashboards have been designed to ensure that the data displayed has the maximum benefit in providing information at a glance.

Standard Reporting Dashboards are now available across Orchard Asset. This allows simple access to the wealth of data contained within Orchard Asset by presenting an overview, of what would otherwise be complex information, in a visual and easy to digest format.

Key Features and Benefits

- Optional choice of dashboards.
- All dashboards are responsive to the device being used.
- Interactive clickable and drillable charts, to the lowest location /property level, including the ability to group by and total data columns.
- Display of additional information when hovering over the graphics.
- Where applicable, filters to target data for specific years /months which automatically updates the chart.
- Data updated automatically giving a single view.
- Installed with all the required Orchard Asset data marts aligned to the relevant dashboards.
- Secure automatic single log on to the dashboards.
- Ability to export to csv, pdf, Excel.
- Ability to schedule the export of chart information.
- Additional consultancy services available if the standard dashboard does not meet requirements.

Information at a Glance

The **High Level Overall** dashboard has been designed to present key information from across the suite of modules and is embedded into the Home screen which is presented automatically following logging into the Orchard Asset application.

Key data is available across 4 tabs -

- Stock / SAP - showing details from the Core & Location and Energy modules.
- Element Renewal - showing details from the Survey module.
- Asbestos / Projects - showing details from the Asbestos and Projects modules.
- Servicing / Inspections - showing details from the Servicing module.

High Level Dashboard example

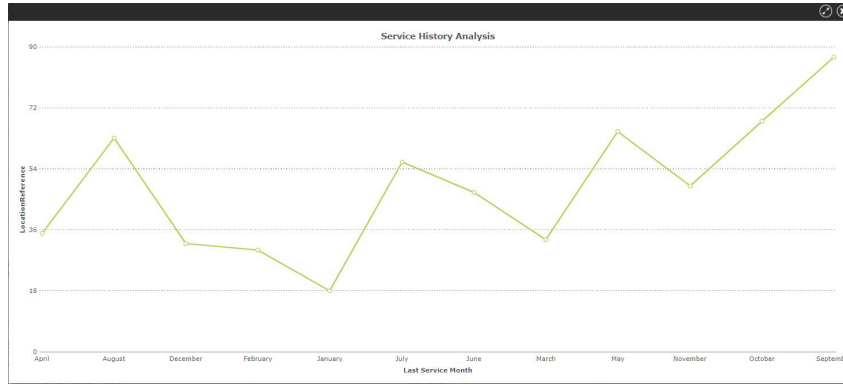


Where designed, the charts have interactive filtering available, e.g. filter by Year, Month, Date From and Date To options.



Drilling Down Into the Data

The majority of the charts provide the ability to drill into underlying data to get a closer look at the detail.



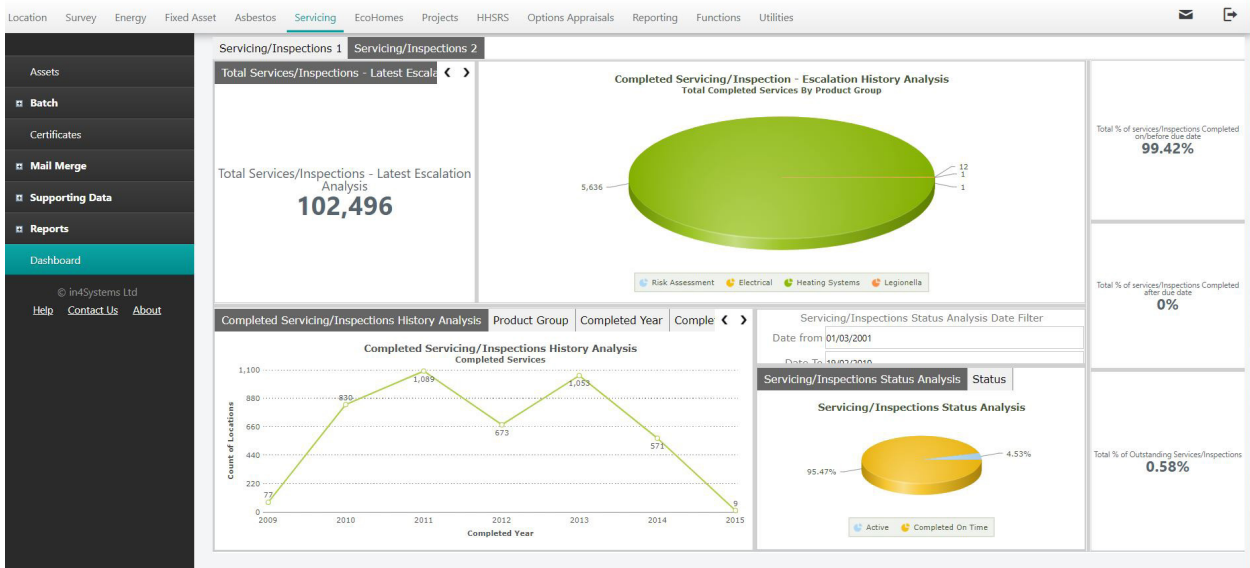
Service History Analysis	
ProductGroup	LocationReference
Risk Assessment	1
Electrical	17
Total	18

The complexity of the chart will depend on the number of drill down options with each chart drilling to the lowest location level.

Modular Dashboards

Orchard Asset reporting dashboards include the following modular dashboards:

- Asbestos
- Servicing
- Projects



Orchard Information Systems Ltd

3rd Floor, Central Square, Forth Street, Newcastle upon Tyne, NE1 3PJ.

T 0191 203 2500 E info@orchard-systems.co.uk

Registered Company No. 1900078

www.orchard-systems.co.uk

